

Product Catalog

Qt**PRO**[®]

Dynasound**PRO**[®]

biamp.[™]



cambridge[™]
SOUND MANAGEMENT

Qt® Emitters

Qt Emitters are what makes QtPro® the most popular sound masking system on the market today. Emitters come in packs of 4 with either 16', 25', or 30' cables.



Features

- Wide dispersion direct field speakers with 1.25" (3.17 cm) drivers
- Small driver size results in nearly 180 degree distribution of direct field sound masking
- Delivers four uncorrelated audio channels to prevent phasing/comb-filtering
- DIP switches reduce the volume level up to 9 dB in 3 dB increments for easy microzoning
- Comes standard with slip ring for acoustical tile mounting
- Suitable for use in air handling spaces and complies with UL 2043

Specifications

- Height: 2.5" (6.4 cm)
- Diameter: 3.25" (8.3 cm)
- Mounting Hole Diameter: 2.675" (6.8 cm)
- Weight: 5.6 oz (159 g)
- Color: White
- Sound Masking Frequency Response: 200 Hz - 6300 Hz
- Masking Min - Max SPL: 30 dBA - 60 dBA @ 1 meter
- Cabling: Category UTP Cabling (8 conductor)
- Connections: Input / Output - RJ45 Modular Jack

Specifications based on emitter array using published layout practices in conjunction with Qt Control Processor.

Optional Emitter Mounting Accessories



UNIVERSAL BRACKET

For mounting emitters to a wall or ceiling. Rotates in 45-degree increments for optimal sound dispersion. Available in white or black.



DRYWALL CONDUIT

For mounting emitters into hard ceilings in areas requiring conduit mounting. Compatible with standard or Active Emitter.



BEAM BRACKET

For mounting emitters to exposed I-beams or trusses. Available in white or black.



PLENUM BACK CAN

For mounting emitters into acoustic ceiling tile in regions with special fire and/or conduit requirements.



DRYWALL

For mounting emitters into drywall ceilings. Compatible with standard or Active Emitter. Kit with additional Drywall Roughin Bracket also available (specify DRB-1 KIT).



PENDANT MOUNT

Offers an attractive way to install emitters in an open or raised ceiling space and suspends them at the optimum height for best coverage. Includes pendant mount top and cylinder, cable, and cable box cover assembly. Available in black or white.

Qt® Active Emitters

The Qt Active Emitter provides higher SPL and a broader frequency range than the standard Qt Emitter, making it a good choice for workplaces in need of paging and background music capabilities in addition to masking.



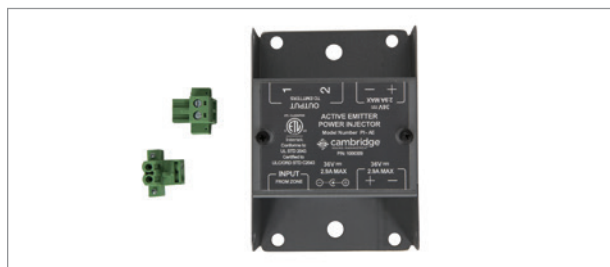
Features

- Active electronics power the speaker
- Lower frequency extension down to 125 Hz octave band for sound masking and 115 Hz for paging and music
- 17 dB louder than previous direct field emitter offerings
- Suitable for use in air handling spaces and complies with UL 2043
- Delivers four uncorrelated audio channels to prevent phasing/comb-filtering
- Comes standard with a slip-ring mount for acoustical tile mounting
- Rear DIP switches reduce volume by up to 4.5 dB in 1.5 dB increments, if needed
- Use with Qt 300 or Qt 600 control modules

Specifications

- Height: 3.5" (8.9cm)
- Diameter: 3.25" (8.3 cm)
- Mounting Hole Diameter: 2.675" (6.8 cm)
- Weight: 6.5 oz. (184 g)
- Color: white
- Masking Frequency Response: 125 Hz - 10,000 Hz
- Music / Paging Frequency Response: 115 Hz - 12,000 Hz (-10 dB)
- Masking Min - Max SPL: 30 dBA to 60 dBA @ 1 meter
- Music / Paging Max SPL: 74 dBA @ 1 meter
- Cabling: Category UTP Cabling (8 conductor)
- Connections: Input / Output - RJ45 Modular Jack

Specifications based on emitter array using published layout practices in conjunction with Qt Control Processor.



Active Emitter Power Injector

Combines DC power from the Active Emitter Power Supply with the audio signal from the QtPro module in order to provide a powered "signal" for the Active Emitter. There are two output ports that each support up to 25 Qt Active Emitters. It can be placed in the plenum and fits inside a standard 4x4 electrical enclosure.



Active Emitter Power Supply

Provides DC power to the Active Emitter through the Active Emitter Power Injector. It provides three 14/2 conductor cabling outputs that each power up to 50 Qt Active Emitters for a total of 150 Qt Active Emitters maximum.*

* See Qt Active Emitter design guidelines for emitter count limitations.

Qt® 100



Ideal for smaller, single zone spaces up to 12,000 square feet (1100 m²).

Features

- 1 zone, up to 120 standard emitters
- 1 audio input for paging or music
- Contact closure shutoff
- Front panel control with LCD
- Panel lock (software)
- Surface mount only

Specifications

- Width: 7" (17.8 cm)
- Height: 3.5" (8.9 cm)
- Depth: 0.875" (2.3 cm)
- Weight: 6 oz (170 g)
- Max. power consumption: 7 total watts
- Auxiliary audio inputs: 5000 ohms, dry line-level input (+4 dBu max)
- Power Supply Operating Voltage: Input: 100 - 240 VAC @ .6 Amp - Output: 24 VDC @ 1.0 Amp
- Certifications: FCC Part 15, RoHS Compliant, CE US STD 60065, CAN/CSA STC C22 2 60065, ETL Listed, Green Spec Listed

Qt® 300



Ideal for medium sized, 3-zone spaces up to 36,000 square feet (3500 m²). Can be used with Qt Emitters or Qt Active Emitters (on separate zones).

Features

- Up to 3 zones, 120 standard emitters per zone
- 2 audio inputs for paging and music
- Contact closure shutoff
- Front panel with LCD or browser-based software control (or control via the Qt Command Center, sold separately)
- Panel lock (hardware)
- Automatic ramping feature to for masking acclimatization
- Time-of-day scheduling
- Adjustable equalizer for masking and audio inputs
- Built-in clock with battery backup
- Wall mount bracket included, optional rack mount bracket also available (SKU: RM-QT)
- Ethernet port
- Web interface control by any web-enabled device
- Third party control API/Ethernet

Specifications

- Width: 11" (27.9 cm)
- Height: 3.5" (8.9 cm)
- Depth: 3.8" (9.7 cm)
- Weight: 1.5 lbs. (680 g)
- Max. power consumption: 15 total watts
- Auxiliary audio inputs: 5,000 ohms, dry line-level input (+4 dBu max)
- Power Supply Operating Voltage: Input: 100 - 240 VAC @ .9 Amp - Output: 24VDC @ 1.5 Amp
- Certifications: FCC Part 15, RoHS Compliant, CE US STD 60065, CAN/CSA STC C22 2 60065, ETL Listed, Green Spec Listed



Qt® 600



Ideal for medium to large multi-zone spaces of up to 72,000 square feet (7000 m²). Can be used with Qt Emitters or Qt Active Emitters (on separate zones).

Features

- Up to 6 zones, 120 standard emitters per zone
- 2 audio inputs for paging and music
- Contact closure shutoff
- Front panel with LCD or browser-based software control (or control via the Qt Command Center, sold separately)
- Panel lock (hardware)
- Automatic ramping feature to for masking acclimatization
- Time-of-day scheduling
- Adjustable equalizer for masking and audio inputs
- Built-in clock with battery backup
- Wall mount bracket included, optional rack mount bracket also available (SKU: RM-QT)
- Ethernet port
- Web interface control by any web-enabled device
- Third party control API/Ethernet

Specifications

- Width: 13.5" (34.3 cm)
- Height: 3.5" (8.9 cm)
- Depth: 3.8" (9.7 cm)
- Weight: 3 lbs (1.4 kg)
- Max. power consumption: 27 total watts
- Auxiliary audio inputs: 5,000 ohms, dry line-level input (+4 dBu max)
- Power Supply Operating Voltage: Input: 100 - 240 VAC @ .9 Amp - Output: 24VDC @ 1.5 Amp
- Certifications: FCC Part 15, RoHS Compliant, CE US STD 60065, CAN/CSA STC C22 2 60065, ETL Listed, Green Spec Listed

Qt® Room Control



Allows users to adjust the sound masking level for an individual room or a space.

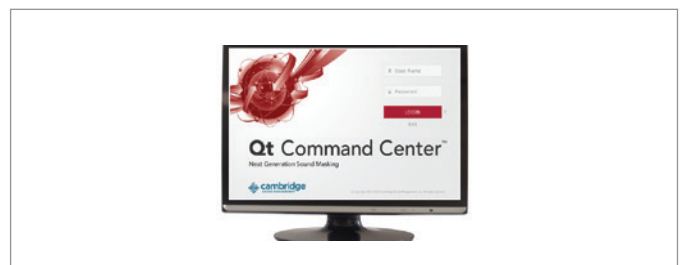
Features

- Decora® centerplate, faceplate, and knob available in white
- Features 6 separate volume settings, from -10.0 dB to 0.0 dB (nominal)
- Bottom level setting installer selectable between Mute and -10.0 dB
- Controls up to 8 Qt Emitters or 14 Active Emitters
- Mounts in most standard electrical boxes, including open back low voltage brackets

Specifications

- Width: 1.9" (4.8 cm)
- Height: 4.1" (10.4 cm)
- Depth: 2.2" (5.6 cm)
- Weight: 4.7 oz (133 g)
- No external power required
- Input/Output Wire Specifications: CAT 3, 5, 6 cables

Qt® Command Center



Windows software application that allows for the administration, management, and adjustment of multiple Qt control modules across an enterprise. The user friendly software makes accessing control modules on a corporate LAN simple, eliminating the need to access multiple control modules manually. The Qt Command Center helps large facilities ensure optimal system performance from anywhere in the world. Compatible with Microsoft Windows 7 or newer. Single user, additional user, and unlimited user licenses available.

Qt® Conference Room Edition

Designed to protect speech privacy in conference rooms, meeting rooms, and board rooms. The kit includes a control module, privacy signs, emitters, and all of the necessary cables.



Features

- Control module and two privacy signs provide clear indication that the system is activated
- Easy control by third party control systems (Crestron/AMX/Extron) using dry contact closure with status feedback
- Smooth sound masking ramp up and ramp down to limit disruptions
- Can be turned on and off for meetings or left running at all times
- Out-of-the-box support for conference rooms with up to 40 ft (12 m) of exposed wall

Specifications

CONTROL MODULE

- Width: 8.31" (21.1 cm)
- Height: 4.44" (11.3 cm)
- Depth: 1.06" (2.7 cm)
- Weight: 0.7 lb (300 g)
- Power supply: compatible with 100V to 240V AC power mains
- Power consumption: entire system uses less than 7 watts
- Not compatible with Qt Active Emitters

PRIVACY SIGNS

- Width: 3.5" (9 cm)
- Height: 4.5" (11.3 cm)
- Depth: 0.19" (0.48 cm)
- Weight: 0.1 lb (50 g)
- Power supply: powered from the control module via 20AWG 2-conductor plenum rated cabling (included)
- Not compatible with Qt Active Emitters

QT EMITTERS (8)

- Height: 2.5" (6.4 cm)
- Diameter: 3.25" (8.3 cm)
- Weight: 5.6 oz (159 g)
- Power supply: powered via control module via plenum rated Category cabling (included)

Qt® Patient Privacy System

Designed to protect speech privacy in medical office reception areas, exam rooms, and pharmacy line-up areas. The kit includes a control module, privacy signs, emitters, and all of the necessary cables.



Features

- Control module and privacy signs provide clear indication that the system is activated and privacy is being protected
- Premium, minimalist design style seamlessly fits in with any design

Specifications

CONTROL MODULE

- Width: 8.31" (21.1 cm)
- Height: 4.44" (11.3 cm)
- Depth: 1.06" (2.7 cm)
- Weight: 0.7 lb (300 g)
- Power supply: compatible with 100V to 240V AC power mains
- Power consumption: entire system uses less than 7 watts

PRIVACY SIGNS

- Width: 3.5" (9 cm)
- Height: 4.5" (11.3 cm)
- Depth: 0.19" (0.48 cm)
- Weight: 0.1 lb (50 g)
- Power supply: powered from the control module via 20AWG 2-conductor plenum rated cabling (included)

QT EMITTERS (8)

- Height: 2.5" (6.4 cm)
- Diameter: 3.25" (8.3 cm)
- Weight: 5.6 oz (159 g)
- Power supply: powered via control module via plenum rated Category cabling (included)

DynasoundPro: Networked Sound Masking System

Dynasound**PRO**

The industry's first PoE (power over Ethernet) sound masking system sets the standard for control. Every speaker can be individually configured to receive one or more of eight network audio channels, and the output of one or more of four sound masking generators. Privacy Manager software enables adjustments on a system-wide, per zone, or per speaker basis.

NECESSARY COMPONENTS

DS8000 PoE Network Speaker Controller



The DS8000 speaker controller is the industry's first power over Ethernet sound masking controller.

Features:

- Power over Ethernet (PoE) and CAT5 cabling provide power and networked digital audio signals to the DS8000
- Eight speaker outputs designed to power Dynasound's network capable speakers
- Capable of receiving 8 network audio channels
- Contains four independent sound masking generators each having full 1/3 octave EQ
- Each speaker output has independent control and access to the eight audio network channels and the four internal sound masking generators
- A DSP matrix mixer allows any combination of channels to be delivered to any speaker

Specifications

- Width: 5.25" (13.3 cm)
- Height: 7.25" (18.4 cm)
- Depth: 1.75" (4.5 cm)
- Weight: 2 lbs (907.2 g)
- Max. power consumption: 12 watts
- Inputs: Cobranet Network Audio

DSPoE24 24 Port PoE Network Switch

DSTS10POE 10" Touch Screen Panel PC & Mount*

High resolution touch screen controller provides two network connections and ships with Privacy Manager software. Used when user adjustment, scheduling of masking levels, or contact closure shutoff are required.

AVAILABLE SPEAKERS

DS1356 Plenum and Open Structure Speaker



Features

- Clean, streamlined appearance
- Single point suspension for easy installation
- ETL listed to conform to UL1480 and CSA C22.2 60065
- Specify DS1338 for 70 volt systems

Specifications

- Height: 4.8" (12.4 cm)
- Diameter: 8.5" (21.6 cm)
- Weight: 6 lbs. (2.72 kg)
- Color: white or black
- Frequency Response/-10dB down: 125 Hz to 10000 Hz
- Sensitivity (2.83 Volts @ 1 meter on Axis): 91.9
- Cabling: 18 AWG two conductor wire
- Nominal Impedance: 8 ohms

DSMSK1 Tactile Transducer DSSD1-TI Tactile Transducer

- For use in drywall ceilings
- UL-listed and complies with UL 2043
- Use DSSD1-TI for masking, paging, and music and DSMSK1 for masking only.

DS1398 Under-floor and Shallow Cavity Speaker



Features

- Performance-engineered dual drivers with tuned ports are well-suited for sound masking produce uniform 360-degree dispersion
- For use in floor cavities as shallow as 1-3/4"
- Optional bridge mount for use in ceiling plenums (SKU: DSSSB-4)
- ETL listed to conform to UL1480 and CSA C22.2 60065
- Specify DS1390 for 70 volt systems

Specifications

- Width: 5.25" (13.3 cm)
- Height: 1.25" (3.2 cm)
- Length: 6.25" (15.88 cm)
- Weight: 2 lbs. (907.2 g)
- Color: white
- Frequency Response/-10dB down: 160Hz to 6300Hz
- Sensitivity (2.83 Volts @ 1 meter on Axis): 80.7
- Cabling: 18 AWG two conductor wire
- Nominal Impedance: 4 ohms

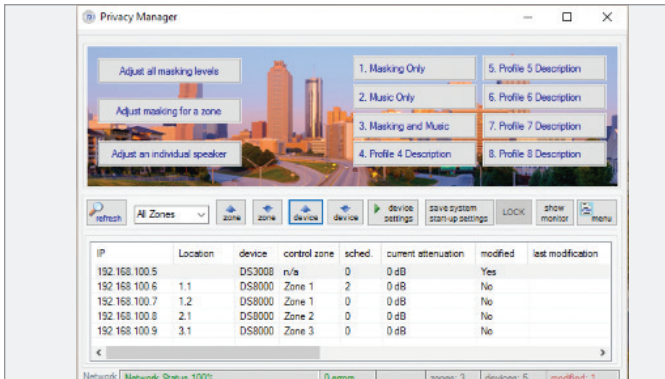
DS1320 Qt Active Emitter, Fusion Edition

This version of the Qt Active Emitter can be connected to a DS8000 via plenum rated AWG 2 conductor cable and a terminal block connector to create individually networked emitters.

* Customers can optionally purchase their own computer/tablet to run Privacy Manager software

Privacy Manager Software

Dynasound's Privacy Manager software brings sound masking system automation to a new level.



While providing professional level controls that audio technicians and consultants require, facility managers and end-users will appreciate the easy to use features. Previously configured settings and profiles may be recalled with a single touch. Privacy Manager software is used to control DS3002, DS3008, and DS8000 processors. The software and future updates are free of charge and are supplied with DynasoundPro systems.

- User defined sound masking schedules can be assigned on a per zone basis
- User defined profiles may be recalled using push buttons or scheduled to start automatically
- Every individual speaker can be adjusted independently; both volume and channel selection
- Optional contact closure module provides external triggers for system functions
- Runs on Windows XP and higher

DS3008 Networked Sound Masking, Paging, and Music Processor



An eight channel sound masking processor with full networking capability. It can be used as the paging and music interface for the Networked system or the masking generator, paging, and music interface for the 70 volt system.

Features:

- Four sound masking generators with 1/3 octave band EQ, high and low pass filters
- Eight balanced inputs with level controls, equalizers, and compressors for DS 3008 (DS 3002 has two)
- Eight balanced outputs with level control
- CobraNet™ digital audio network ready
- Matrix mixer allows any combination of inputs and sound masking to be routed to any

- ETL listed UL60065
- Rack mountable (1 RU)
- Can be used as the paging and music interface for the Networked system or the masking generator, paging, and music interface for the 70 volt system

Specifications

- Width: 19" (48.26 cm)
- Height: 1.75" (4.45 cm)
- Depth: 8" (20.32 cm)
- Weight: 6 lbs. (2.72 kg)
- Max. power consumption: 21.5 watts
- Auxiliary audio inputs: digital audio network ready and balanced analog Input and Output

ALSO AVAILABLE

DS3002 Networked Sound Masking, Paging, and Music Processor

The DS3002 has the same internal DSP as the DS3008 but with 2 balanced line level inputs and outputs instead of 8.

Sound Masking Generators/Mixers/ Amplifiers for 70 Volt Systems

Dynasound**PRO**

DS1042



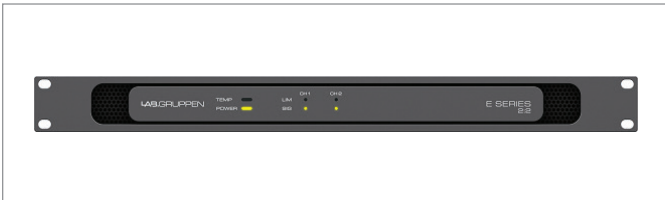
A digital masking generator with adjustable volume and low pass filter for tuning. A 25 watt amplifier provides power for up to 25 speakers, or approximately 6000 square feet (557 m²).

Specifications

- Width: 7.75" (19.69 cm)
- Height: 3.5" (8.89 cm)
- Depth: 8.25" (20.96 cm)
- Weight: 9 lbs. (4.08 kg)
- Max. power consumption: 75 watts

Accessories

DSL22 Amplifier



For use when either DS3008 or DS3002 is the generator for a 70 Volt System.

Features

- 200 W amplifier carrying 2 flexible output channels in a high power density 1 rack unit
- Energy efficient with Energy Star* certification for supreme green credentials and exceptionally low lifetime running costs
- Flexible IntelliDrive permits delivering the 2 x 100 W at constant voltage 70 V or low impedance (2, 4 and 8 Ohms) on any channel

Specifications

- Width: 19" (48.26 cm)
- Height: 1.75" (4.4 cm)
- Depth: 10.9" (27.6 cm)
- Weight: 9.3 lbs. (4.2 kg)
- Frequency response: 2 Hz - 40 kHz
- Input impedance: 20 kOhm
- Nominal voltage: 100 - 240 VAC
- Operating voltage: 70 - 265 VAC

DS1092



A digital masking generator with adjustable low pass filter for tuning. Incorporates a mixer to introduce paging and music signals into the system. A 40 watt amplifier provides power for up to 40 speakers, or approximately 10,000 square feet (929 m²).

Specifications

- Width: 9" (22.86 cm)
- Height: 3.5" (8.89 cm)
- Depth: 11.5" (29.21 cm)
- Weight: 10 lbs. (4.54 kg)
- Max. power consumption: 135 watts

DSRMP Attenuator



For use when either DS3008 or DS3002 is the generator for a 70 Volt System.

Features

- Each attenuator is rated at 100 watts
- Eleven-stage detent attenuation control (from 0 to 10) in 1.5 dBA increments
- Connections are made with pluggable rear mounted connectors
- Available with one to eight attenuators per rack mount panel (Specify DSRMP-1, DSRMP-2,...DSRMP-8)
- Additional volume controls available (DSVC-1)
- 2 rack units

Specifications

- Width: 19" (48.26 cm)
- Height: 3.5" (8.89 cm)
- Depth: 4" (10.16 cm)
- Weight: 9 lbs. (4.08 kg)

DS2022 Return Air Grill Cover

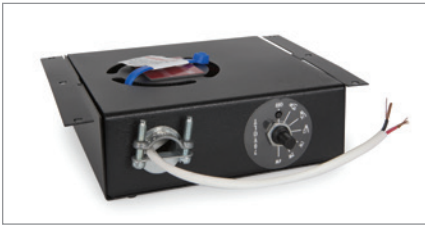
- Acoustically treats open air-return grills for sound masking treatment
- Sized to fit standard 2' x 2' grid

DynasoundPro Eavesdropping and SCIF Protection

Dynasound**PRO**™

DynasoundPro eavesdropping protection systems are designed to prevent deliberate and intentional attempts to intercept private and confidential conversations.

DS2400 Pipe, Duct, and Wall Maskers



Securing of pipes and ducts is critical when DIAM and DCID requirements for SCIF need to be met. The DS2400 may be used to ensure eavesdropping protection of pipes and ducts that breach the perimeter of a secure environment by resonating these penetrations, filling them with sound masking and/or misinformation. Additionally, it resonates the plane of any wall along the perimeter of a secure environment.

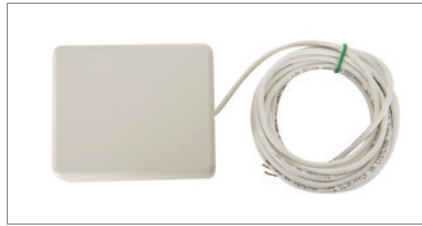
Features

- Fills pipes, square ducts and round ducts, and walls with sound masking
- Lightweight and easy to install
- Does not cause pressure drop or alter air flow when applied to ductwork
- Does not require separate transformer
- Individual level adjustment
- Durable plenum-rated metal housing
- Specify DS2408 for Network Systems

Specifications

- Width: 5" (12.7 cm)
- Height: 1.75" (4.45 cm)
- Length: 5" (12.7 cm)
- Weight: 2 lbs. (907.2 g)
- Color: Black
- Sound Masking Frequency Response: 100 Hz – 8 kHz
- Cabling: 18 AWG 2 conductor
- Impedance: 8 ohm driver
- Transformer: Primary 70.7v, Secondary 8 Ohms, Switch Positions: 1/8, 1/4, 1/2, 1, 2, 4 watts

DS2500 Window, Door, and Wall Maskers



Securing of windows, doors, and walls is critical when DIAM and DCID requirements for SCIF need to be met. DS2500 series sound maskers are used to these areas against human and electronic eavesdropping by applying full bandwidth sound masking. The unit may be attached to the interior side of any window, door or in some cases, wall surfaces. It is effective against laser eavesdropping techniques, as well as the use of parabolic microphones.

Features

- Protects windows, doors, and walls against human and electronic eavesdropping techniques
- Does not require separate transformer
- Available with or without rotary switch
- Lightweight and easy to install
- UV rated adhesive mount
- Accepts a mix of sound masking, music, and misinformation signals
- Specify DS 2508 for Network Systems

Specifications

- Width: 5" (12.7 cm)
- Height: 1.75" (4.45 cm)
- Length: 5" (12.7 cm)
- Weight: 2 lbs. (907.2 g)
- Color: Beige
- Sound Masking Frequency Response: 100 Hz – 8 kHz
- Cabling: 18 AWG 2 conductor
- Impedance: 8 ohm driver
- Transformer: Primary 70.7v, Secondary 8 Ohms, Switch Positions: 1/8, 1/4, 1/2, 1, 2, 4 watts

DS2600 Portable Eavesdropping Protection Kit



A complete, compact, and portable eavesdropping protection system effective when DIAM and DCID requirements for SCIF need to be met in offsite or occasional applications. It offers the ability to quickly secure an environment against human and electronic eavesdropping, as well as advanced signal recovery techniques. The non-deterministic sound masking signal can be layered with additional sources, such as music, nonsense syllables, and misinformation. This creates a complex signal that renders eavesdropping and signal recovery methods ineffective, providing an environment safe for sensitive information to be discussed.

The system consists of a DS1092 sound masking generator/mixer/amplifier, eight sound masking devices, standard RCA-type phono plug connector cables to daisy-chain the entire system, and a flight-approved, atmosphere compensating, Pelican Protector Case™. An optional SKU (DS2600XL) includes a larger Pelican Protector Case that provides room for an additional 22 sound masking devices, for a maximum of 30 devices per case.

Product Type	SKU	Description
Active Emitters	<i>White Emitters</i>	
	E-P-W-16-4	Active emitters, white, 4 pack, with 4 x 16 ft white plenum rated cables
	E-P-W-25-4	Active emitters, white, 4 pack, with 4 x 25 ft white plenum rated cables
	E-P-W-30-4	Active emitters, white, 4 pack, with 4 x 30 ft white plenum rated cables
	<i>Black Emitters</i>	
	E-P-B-16-4	Active emitters, black, 4 pack, with 4 x 16 ft black plenum rated cables
	E-P-B-25-4	Active emitters, black, 4 pack, with 4 x 25 ft black plenum rated cables
	E-P-B-30-4	Active emitters, black, 4 pack, with 4 x 30 ft black plenum rated cables
Standard Emitters	<i>White Emitters</i>	
	E-A-W-16-4	Standard emitters, white, 4 pack, with 4 x 16 ft white plenum rated cables
	E-A-W-25-4	Standard emitters, white, 4 pack, with 4 x 25 ft white plenum rated cables
	E-A-W-30-4	Standard emitters, white, 4 pack, with 4 x 30 ft white plenum rated cables
	<i>Black Emitters</i>	
	E-A-B-16-4	Standard emitters, black, 4 pack, with 4 x 16 ft black plenum rated cables
	E-A-B-25-4	Standard emitters, black, 4 pack, with 4 x 25 ft black plenum rated cables
	E-A-B-30-4	Standard emitters, black, 4 pack, with 4 x 30 ft black plenum rated cables
Control Modules	Qt 100	Qt-100, 1-zone sound masking control module
	Qt 300	Qt-300, 3-zone sound masking control module
	Qt 600	Qt-600, 6-zone sound masking control module
	SQT-1	Sonet Qt, individual sound masking system for up to 200 sq ft.
Cabling	CC-10-W	10' plenum rated cables - white
	CC-10-B	10' plenum rated cables - black
	CC-25-W	25' plenum rated cables - white
	CC-25-B	25' plenum rated cables - black
	CC-50-W	50' plenum rated cables - white
	CC-50-B	50' plenum rated cables - black
	CC-75-W	75' plenum rated cables - white
	CC-75-B	75' plenum rated cables - black
	CC-100-W	100' plenum rated cables - white
Mounts/Brackets	CC-100-B	100' plenum rated cables - black
	AE-UB-W	Universal mounting bracket - white - compatible with all Qt emitters
	AE-UB-B	Universal mounting bracket - black - compatible with all Qt emitters
	AE-BB-W	Beam mounting bracket - white - compatible with all Qt emitters
	AE-BB-B	Beam mounting bracket - black - compatible with all Qt emitters
	PM-W	Pendant mount - white
	PM-B	Pendant mount - black
	DRB-1	Drywall rough-in bracket
	DRB-1 KIT	Drywall rough-in bracket with plastic drywall mount (DM) included
Accessories	DM	Plastic drywall mount for adjustable and active emitters, hole saw (HS-DW) purchased separately.
	PBC	Plenum back can
	RM-QT	Rack mount bracket for the Qt 300 / 600 control module
	QT-RC3	In room volume control with Decora style plate for the Qt-300 and Qt-600
	HS-ACT	68 mm acoustical ceiling tile hole saw
	HS-DW	76 mm drywall hole saw
	PI-AE	Active emitter power injector
	PS-AE-3	Active emitter power supply
	CC-AE-400-PC	14 AWG cable, 2 Conductor, plenum rated, 400 foot spool.
Demo Kits	PS-3	Qt-300/600 power supply & cord
	FCC-1	RJ45 female/female coupler
	DK-300-AE	Qt 300 active emitter demo kit
Software	Qt-CC	Qt Command Center
System	QT-HCE	Qt Patient Privacy System
	QT-CRE	Qt Conference Room Edition

DynasoundPro Product List

Dynasound**PRO**

Product Type	SKU	Description
70 VOLT, ANALOG SYSTEMS		
Self-Contained Generator / Mixer / Amplifier for 70 Volt systems	DS1092	Sound masking generator and amplifier with paging and music inputs
	DS1042	Sound masking generator and amplifier
70 Volt Masking Loudspeakers	DS1338W	70V plenum loudspeaker - white
	DS1338B	70V plenum loudspeaker - black
	DS1390	70V low-profile loudspeaker with clip
	DS1390B	70V low-profile loudspeaker with tile bridge
	DS1375	In-ceiling downward firing loudspeaker. 70V and network compatible.
Zone Control Panels - DSRMP Rack Mount Attenuator Panels	DSRMP-1	1 zone volume control panel for 70V systems
	DSRMP-2	2 zone volume control panel for 70V systems
	DSRMP-3	3 zone volume control panel for 70V systems
	DSRMP-4	4 zone volume control panel for 70V systems
	DSRMP-5	5 zone volume control panel for 70V systems
	DSRMP-6	6 zone volume control panel for 70V systems
	DSRMP-7	7 zone volume control panel for 70V systems
	DSRMP-8	8 zone volume control panel for 70V systems
Sound Masking Generators / Mixers / Controllers	DS3008	12x8x8 channel sound masking generator/mixer/controller
	DS3002	6x2x8 channel sound masking generator/mixer/controller
	DSL622	Lab.gruppen 2x100 70V Amplifier
Eavesdropping Maskers	DS2400	70V duct, pipe, conduit, wall masker for SCIF / secure rooms
	DS2500	70V window, door, wall masker for SCIF / secure rooms
	DS2530	70V window, door, wall masker for SCIF/secure rooms. W/vol. control & retractable cord.
	DS2600	Portable eavesdropping protection kit
	DS2610	Portable eavesdropping protection exciter
	DS2620	Portable eavesdropping protection interconnect cable
Cables and Accessories	DSPC-Y	18 AWG cable, 2 Conductor, plenum rated - yellow
	DSPC-W	18 AWG cable, 2 Conductor, plenum rated - white
	DSPC-B	18 AWG cable, 2 Conductor, plenum rated - black
	DS1920	Rack mount power strip / surge suppressor
	DS2022	Return air grill cover / attenuator
	CCEA	Chicago compliance kit compatible with DS1338 & DS1356
	DSVC-1	Attenuator volume control
	DS11x12	Amplifier shelf
	DSQC-10	Wall mount attenuator
	DSSSB-4	Tile bridge

Product Type	SKU	Description
NETWORKED, DIGITAL SYSTEMS		
Networked Masking Loudspeakers	DS1356W	Network plenum loudspeaker - black
	DS1356B	Network plenum loudspeaker - white
	DS1375	In-ceiling downward firing loudspeaker. 70V and network compatible.
	DS1398	Network low-profile loudspeaker with clip
	DS1398B	Network low-profile loudspeaker with tile bridge
	DS1320-W-4	Active emitter, white - 4 Pack. Cables not included.
	DS1320-B-4	Active emitter, black - 4 Pack. Cables not included.
	DSMSK1	MSK-1 Solid Drive sound masking loudspeaker for drywall
	DSSD1-TI	SD-1 Solid Drive sound masking, music, and paging loudspeaker for drywall
	DSSD1-BR24	SD-1 mounting bracket, 24-inch on-center
	DSSD1-BR12	SD-1 mounting bracket, 12-inch on-center
	DSSD1-BR16	SD-1 mounting bracket, 16-inch on-center
Sound Masking Generators / Mixers / Controllers / Amplifiers	DS3008	12x8x8 channel sound masking generator/mixer/controller
	DS3002	6x2x8 channel sound masking generator/mixer/controller
	DS8000	Network sound masking processor and loudspeaker controller
	CADDY CLIP KIT	Caddy clip with screw
	DSPoE24	Netgear 24 port PoE switch
	DSPP24	24 port patch panel
	DSTS10POE	10" touchscreen panel and mount for networked system
Eavesdropping Maskers	DS2408	Network duct, pipe, conduit, wall masker for SCIF / secure rooms
	DS2508	Network window, door, wall masker for SCIF / secure room
Cables and Accessories	DSPC1	1-foot Category 5 patch cable
	DSPC7	7-foot Category 5 patch cable
	Cat-5	Plenum rated Cat-5 cable
	DSPC-Y	18 AWG cable, 2 Conductor, plenum rated - yellow
	DSPC-W	18 AWG cable, 2 Conductor, plenum rated - white
	DSPC-B	18 AWG cable, 2 Conductor, plenum rated - black
	DS1920	Rack mount power strip / surge suppressor
	DS2022	Return air grill cover / attenuator
	CCEA-98	Chicago compliance kit compatible with DS1398 & DS1390
	DSSFR-12-12	Swing frame wall mount rack (pass-through item-no discount)
	DSPPM-6-12	Pivot frame wall mount rack 6" (pass-through item-no discount)
	DSPPM-8-12	Pivot frame wall mount rack 12" (pass-through item-no discount)
	DSPPM-8-18	Pivot frame wall mount rack 18" (pass-through item-no discount)
	DSSSB-4	Tile bridge

